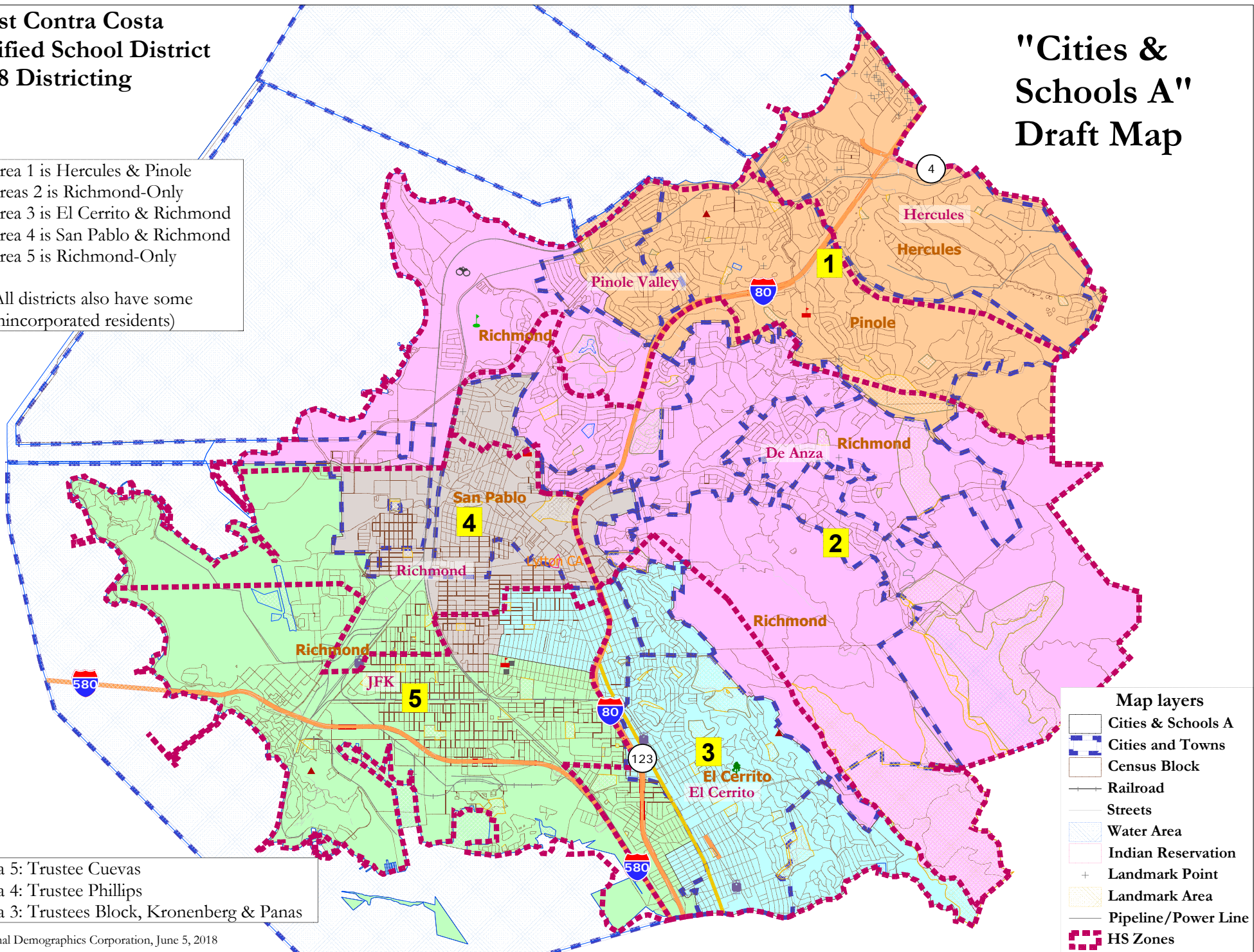


# West Contra Costa Unified School District 2018 Districting

# "Cities & Schools A" Draft Map

Area 1 is Hercules & Pinole  
 Areas 2 is Richmond-Only  
 Area 3 is El Cerrito & Richmond  
 Area 4 is San Pablo & Richmond  
 Area 5 is Richmond-Only

(All districts also have some unincorporated residents)



- Map layers**
- Cities & Schools A
  - Cities and Towns
  - Census Block
  - Railroad
  - Streets
  - Water Area
  - Indian Reservation
  - Landmark Point
  - Landmark Area
  - Pipeline/Power Line
  - HS Zones

Area 5: Trustee Cuevas  
 Area 4: Trustee Phillips  
 Area 3: Trustees Block, Kronenberg & Panas

## WCCUSD - Cities & Schools A

District		1	2	3	4	5	Total
Ideal	Total Pop	47,275	48,037	46,299	47,505	46,731	235,847
47,169	Deviation from ideal	106	868	-870	336	-438	1,738
	% Deviation	0.22%	1.84%	-1.84%	0.71%	-0.93%	3.68%
Total Pop	% Hisp	20%	27%	19%	61%	40%	34%
	% NH White	27%	25%	46%	8%	15%	24%
	% NH Black	16%	22%	10%	16%	33%	19%
	% Asian-American	34%	22%	23%	12%	9%	20%
Citizen Voting Age Pop	Total	35,775	33,564	34,195	22,349	26,887	152,771
	% Hisp	18%	22%	12%	42%	21%	22%
	% NH White	30%	30%	55%	14%	25%	32%
	% NH Black	14%	22%	10%	21%	40%	21%
	% Asian/Pac.Isl.	35%	23%	22%	20%	13%	23%
Voter Registration (Nov 2016)	Total	27,257	25,364	30,430	16,868	24,074	123,994
	% Latino est.	25%	23%	13%	47%	21%	24%
	% Spanish-Surnamed	22%	20%	12%	42%	19%	21%
	% Asian-Surnamed	10%	8%	9%	5%	4%	7%
	% Filipino-Surnamed	6%	3%	1%	2%	1%	3%
	% NH White est.	43%	44%	68%	27%	29%	44%
	% NH Black	21%	30%	12%	35%	49%	28%
Voter Turnout (Nov 2016)	Total	20,353	18,479	24,720	10,066	15,618	89,234
	% Latino est.	24%	22%	12%	48%	21%	22%
	% Spanish-Surnamed	22%	20%	11%	43%	19%	20%
	% Asian-Surnamed	10%	8%	10%	5%	4%	8%
	% Filipino-Surnamed	5%	2%	1%	2%	1%	3%
	% NH White est.	43%	45%	68%	27%	33%	47%
	% NH Black	21%	29%	11%	33%	43%	25%
Voter Turnout (Nov 2014)	Total	10,951	10,030	15,876	4,479	9,004	50,340
	% Latino est.	18%	15%	9%	36%	13%	15%
	% Spanish-Surnamed	16%	14%	8%	33%	11%	14%
	% Asian-Surnamed	9%	7%	9%	4%	4%	7%
	% Filipino-Surnamed	4%	2%	1%	3%	1%	2%
	% NH White est.	49%	45%	72%	24%	39%	51%
	% NH Black est.	20%	30%	10%	31%	42%	24%
ACS Pop. Est.	Total	48,674	49,321	48,500	49,976	49,090	245,562
Age	age0-19	21%	21%	20%	30%	27%	24%
	age20-60	56%	57%	55%	56%	57%	56%
	age60plus	23%	22%	25%	14%	16%	20%
Immigration	immigrants	30%	31%	28%	44%	33%	33%
	naturalized	71%	58%	53%	36%	29%	48%
Language spoken at home	english	58%	54%	62%	28%	50%	50%
	spanish	14%	23%	15%	56%	38%	29%
	asian-lang	21%	14%	13%	11%	9%	14%
	other lang	8%	8%	10%	5%	4%	7%
Language Fluency	Speaks Eng. "Less than Very Well"	16%	20%	17%	38%	24%	23%
Education (among those age 25+)	hs-grad	54%	57%	37%	51%	50%	50%
	bachelor	24%	20%	28%	9%	16%	20%
	graduatedegree	11%	9%	26%	3%	9%	12%
Child in Household	child-under18	29%	27%	25%	41%	30%	30%
Pct of Pop. Age 16+	employed	61%	59%	62%	57%	59%	60%
Household Income	income 0-25k	11%	14%	13%	27%	26%	18%
	income 25-50k	16%	20%	17%	27%	26%	21%
	income 50-75k	17%	18%	16%	21%	18%	18%
	income 75-200k	47%	41%	42%	24%	27%	37%
	income 200k-plus	9%	7%	12%	1%	4%	7%
Housing Stats	single family	82%	73%	78%	67%	58%	72%
	multi-family	18%	27%	22%	33%	42%	28%
	rented	26%	41%	37%	57%	58%	44%
	owned	74%	59%	63%	43%	42%	56%
Total population data from the 2010 Decennial Census.							
Surname-based Voter Registration and Turnout data from the California Statewide Database.							
Latino voter registration and turnout data are Spanish-surname counts adjusted using Census Population Department undercount estimates. NH White and NH Black registration and turnout counts estimated by NDC. Citizen Voting Age Pop., Age, Immigration, and other demographics from the 2012-2016 American Community Survey and Special Tabulation 5-year data.							